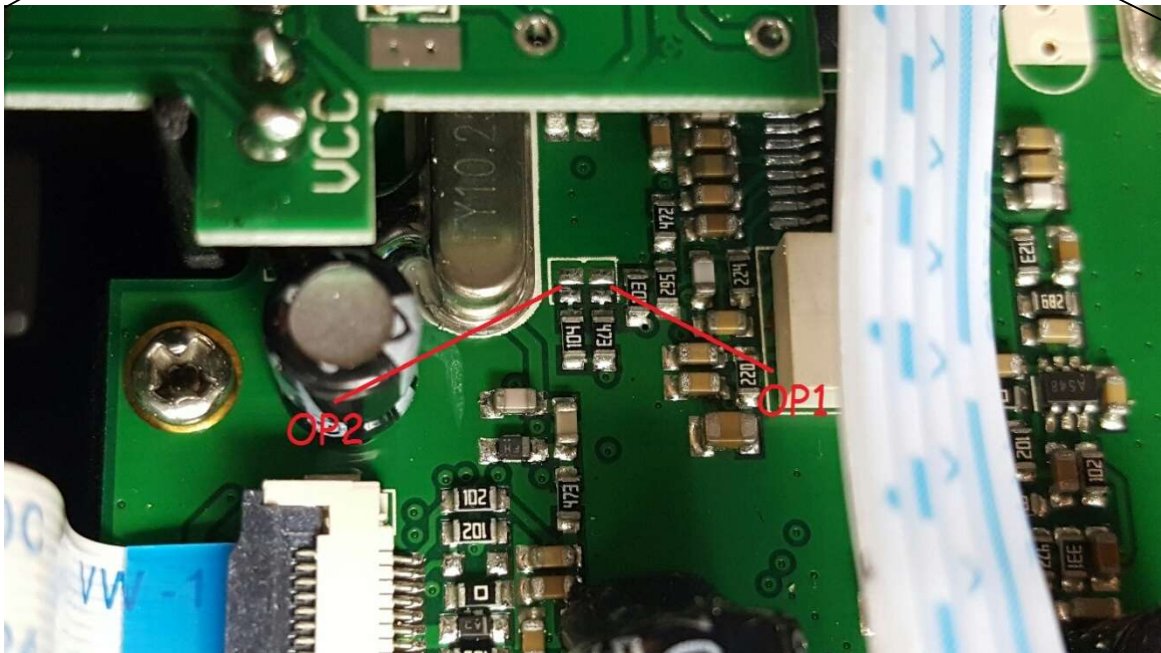
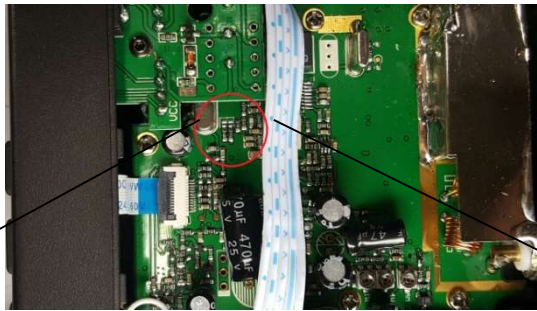


procedure to extend M-MINI

- switch off radio
- remove 4 screws as indicate in the picture below:



- look the area relative the modify as showed below. there are two pad: OP1 and OP2



amateur band

to have this band (28-29.695 MHz) close OP2 and open OP1.

now when you switch on the radio the display shows the operating band as you see below:

	OPERATIVE FREQUENCY MHz
HA	28-28.195
HB	28.2-28.395
HC	28.4-28.595
HD	28.6-28.795
HE	28.8-28.995
HF	29-29.195
HG	29.2-29.395
HH	29.4-29.595
HI	29.6-29.695

to select the operative band needed follow this procedure:

- keep press A/F button during switch ON
- by UP/DOWN of mike chose the band you want
- switch OFF the radio.
- now when you switch ON M-Mini the display shows briefly the operating band.

russia band

to have this band (25.615-30.105 MHz) close OP1 and open OP2.

now when you switch on the radio the display shows the operating band as you see below:

	OPERATIVE FREQUENCY MHz
AE	25.615-26.055
BE	26.065-26.505
CE	26.515-26.955
DE	26.965-27.405
EE	27.415-27.855
FE	27.865-28.305
GE	28.315-28.755
HE	28.765-29.205
IE	29.215-29.655
LE	29.665-30.105

to select the operative band needed follow this procedure:

- keep press A/F button during switch ON
- by UP/DOWN of mike chose the band you want
- switch OFF the radio.
- now when you switch ON M-Mini the display shows briefly the operating band.

poland band

to have this band close OP1 and open OP2 (same as russia band), keep press for three seconds RFG button.

now when you switch on the radio the display shows the operating band as you see below:

PA	25.610-26.050
PB	26.060-26.500
PC	26.510-26.950
PD	26.960-27.400
PE	27.410-27.850
PF	27.860-28.300
PG	28.310-28.750
PH	28.760-29.200
PI	29.210-29.650
PL	29.660-30.100

to select the operative band needed follow this procedure:

- keep press A/F button during switch ON
- by UP/DOWN of mike chose the band you want
- switch OFF the radio.
- now when you switch ON M-Mini the display shows briefly the operating band.

to back on russia band keep press RFG button for three seconds

to extend the power output

- switch off radio
- keep press PTT and RFG during power on
- on the right side of display you will have H to indicate extended power output
- to back original power output repeat the procedure, the H indication disappear.

note: the extension power output work on amateur and russia band.